

MIYOTA

MOVEMENT SPECIFICATIONS

CAL. 5R21/5R32 ANALOG QUARTZ MOV'T

BY CITIZEN WATCH CO., LTD. JAPAN

SUPER SMALL SIZE 3-3/4 Ligne Quartz, (0) JEWELS

MANUFACTURED IN JAPAN

1. BASIC SPECIFICATION

(1) CAL. NO.

*TO CONFIRM WITH MOV'T DRAWING ATTACHED

| CALIBRE | 5R21 | 5R32 |
|--------------|-----------------------|---------|
| Ligne | 3-3/4 | |
| Size*mm | 9.0 × 13.2 × Φ 13.5mm | |
| Total height | 1.90mm | 2.00mm |
| Hands | 2 HANDS | 3 HANDS |
| Battery life | 4 YEARS | 2 Years |
| Battery | SR416SW | |

(2) Time standard

Type of quartz : Tuning fork type quartz crystal

Frequency : 32,768Hz

Accuracy : **+/-20 s/month** worn under normal circumstances

(3) Battery installed

Type of battery : Silver oxide SR416SW (JAPAN-MADE)

(4) Additional Mechanisms & Features:

Second hand stopping at optional position

Power conservative switch

(5) Balanceable weight of hands

| | 5R21 | 5R32 |
|-------------|------------------------|--------------------------|
| Minute hand | Maximum 0.15 μ N·m | Maximum 0.30 μ N·m |
| Second hand | | Maximum 0.0015 μ N·m |

2. SEPARATED PARTS

| | 5R21 / 5R32 |
|--|--------------|
| Setting stem | 065-413 |
| Length of movement center to stem end... | 13.5mm |
| Thread..... | Φ0.7 x 9.0mm |

3. OTHERS

*** Measurement of time rate**

The unit time of measurement must be set at "10s", "20s", "30s"
(not "15s", "25")

And the measurement must be carried out in state of a complete watch.

*** Marking on movement**

**MIYOTA CO.
NO JEWEL
5R21 JAPAN**

**MIYOTA CO.
NO JEWEL
5R32 JAPAN**

*** Typical clearance**

Mov't - Caseback min 150 μ m or more

Top of hands - Glass 300 - 450 μ m *

* depending and subject to the glass and case structure, and hand length

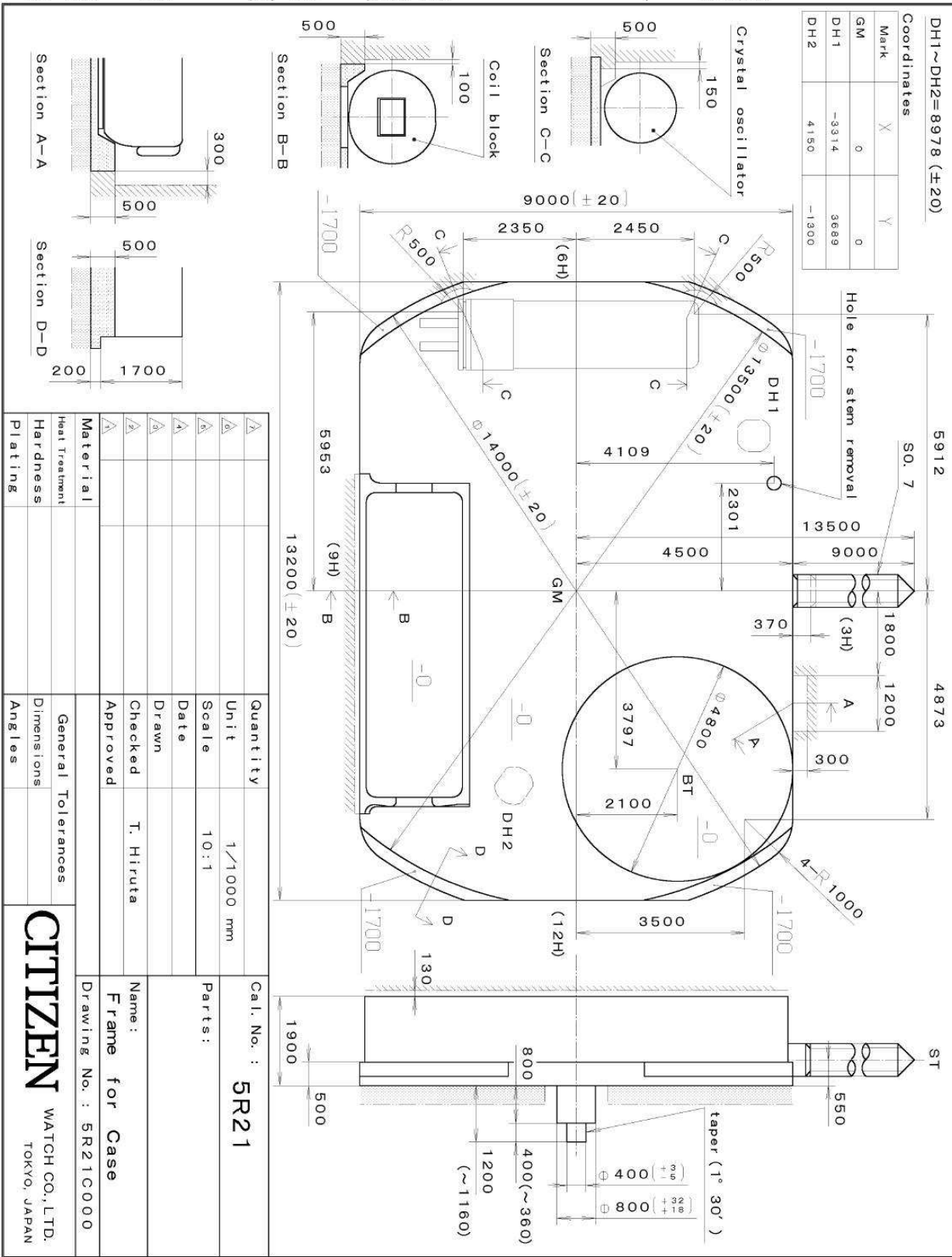
*** 5R21/5R32 are only recommended to use for ladies' size watch**

*** Aluminium second hands should be used for Cal. 5R32**

This specifications might be changed without prior notice.

This drawing is provisional and subject to our reconfirmation and/or revision without notice.

*** T1PW 5R21 (01) *** (2100 1121) 00-06-26



*** T I P W 5R32 (01) *** (2100 1121) 00-06-26

Coordinates
$$\text{DH1} \sim \text{DH2} = 8978 \text{ (}\pm 20\text{)}$$
5912

4873



Coil block

Section C-0

Crystal oscillator

Section B-B

Section A-A

Section D—

| | | | |
|----------------|--|--------------------|-----------|
| 7. | | Quantity | |
| 6. | | Unit | 1/1000 |
| 5. | | Scale | 10:1 |
| 4. | | Date | |
| 3. | | Drawn | |
| 2. | | Checked | T. Hiruta |
| 1. | | Approved | |
| Material | | | |
| Heat Treatment | | | |
| Hardness | | General Tolerances | |
| Plating | | Dimensions | |
| | | Angles | |

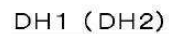
CITIZEN
WATCH CO., LTD.
TOKYO, JAPAN

WATCH CO., LTD.
TOKYO, JAPAN

```

*** TIPW      5R32-00A      (01) ***      (2100 1121)      00-06-15

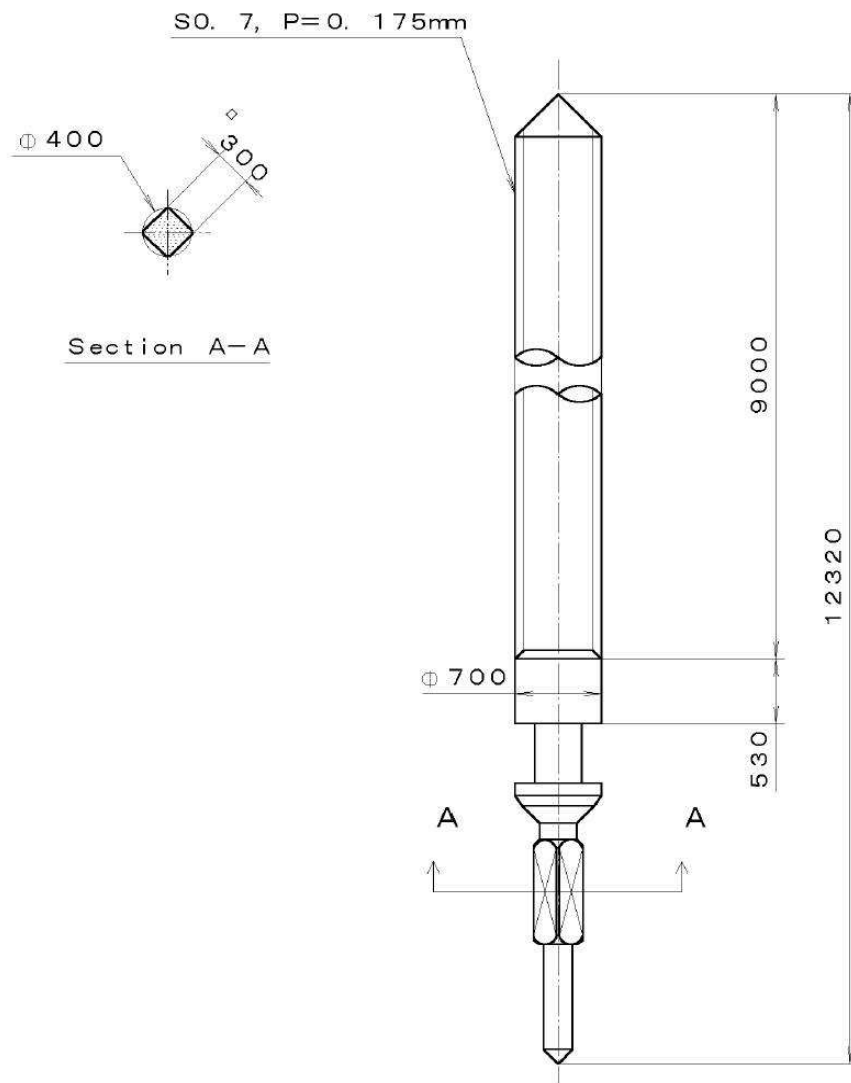
```



WATCH CO., LTD.
TOKYO, JAPAN

This drawing is provisional and subject to our reconfirmation and/or revision without notice.

005-413 (01) xxx 00-06-22 (2100.1121)



| | | | | | |
|----------------|--|--|--------------------|-----------|--|
| | | | Quantity | | Cal. No. : |
| | | | Unit | 1/1000 mm | |
| | | | Scale | 20:1 | Parts: 065-413 |
| | | | Date | | |
| | | | Drawn | | |
| | | | Checked | T. Hiruta | |
| | | | Approved | | Name: SETTING STEM |
| Material | | | | | Drawing No. : 4130S000 |
| Heat Treatment | | | General Tolerances | | CITIZEN WATCH CO., LTD. TOKYO, JAPAN |
| Hardness | | | Dimensions | | |
| Plating | | | Angles | | |